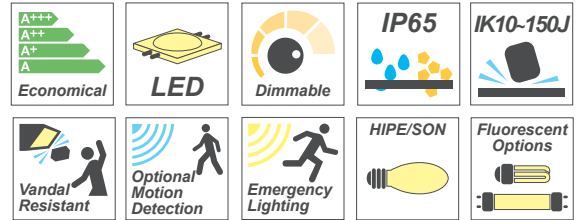
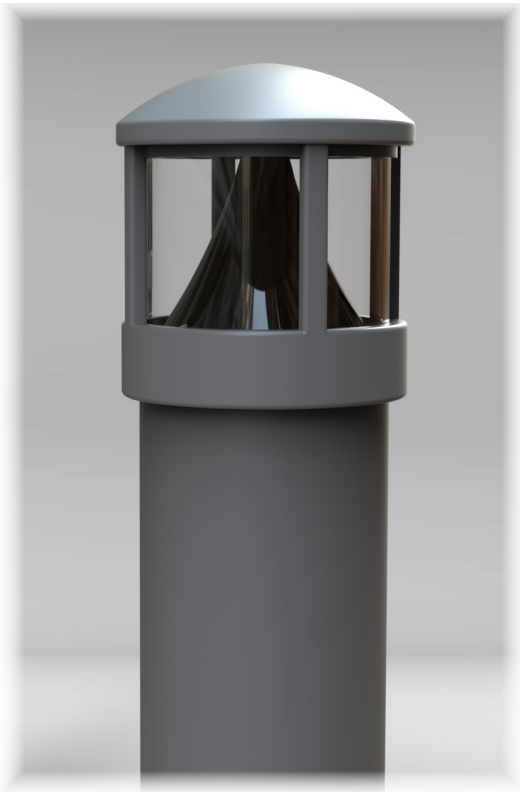




VERMONT

Exterior - Bollard



RAL 9005 Black

RAL 9006 Silver

Grey

CUSTOM RAL

VANDA COAT Option

- Robust Heavy Duty Decorative Aluminium Column Head
- Conical Reflector or Anodised Louvre Stack Lighting Control
- Tough Clear or Frosted Polycarbonate Lens
- Galvanised Heavy Gauge Steel Tube
- Root or Flange Mounted
- Removable LED Gear Tray
- Flush Stainless Security Screw

LED Technical Information

Please refer to website for current LED technical specification

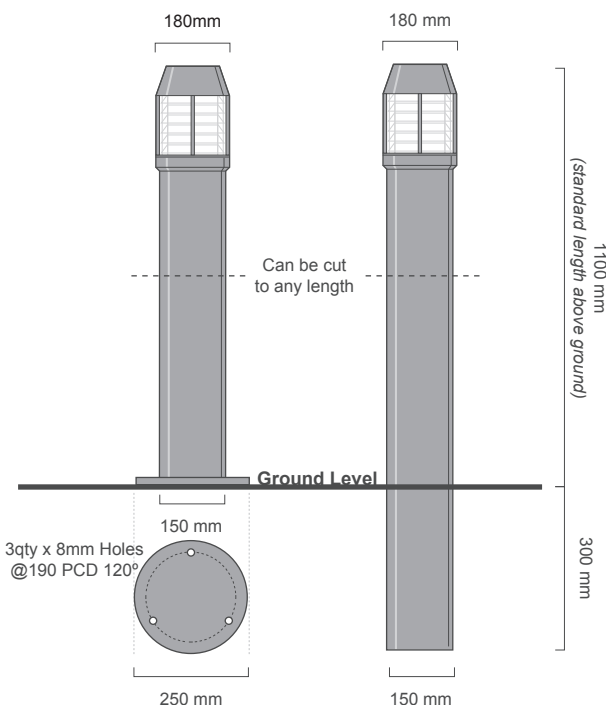
Order Code	Lumen	V out	lm/W	W	Colour Temp	Ra	Weight
	Lm	Output Voltage	Lumen efficacy	Circuit Wattage	Kelvin (K)	CRI	Kg
VMT1.5LED	1500lm	24	125	12.0	4000K/5000K	>80	12.5
VMT2.4LED	2400lm	24	130	18.4	4000K/5000K	>80	12.5
VMT3.3LED	3300lm	24	136	24.2	4000K/5000K	>80	12.5

LED Life-time 50,000Hr L80/B10 (@ 25°C - 40°C)

***RGB Colour Change LED & **Tuneable White LED options**

Ordering Options

Description	Suffix Ordering Code
Root Mounted 'In Ground' Version	/RT
Flange Mounted 'Surface' Version	/FL
Dimmable Options (DALI/1-10v/Sw-240v/Corridor)	/DALI / 1-10v / SW-240v / CORR
Integral 3hr Emergency or 3hr Self Test	/EM3 or /EM3-SELF
Microwave Motion Detection	/M-Wave
Integral Dusk/Dawn Photocell	/PC
180° Light Baffle (Adjustable)	/180°
Clear Lens	/C
Frosted Lens	/F
Security Driver/Key	/SD
Access Door Hatch (Lockable)	/HATCH
LED Compact Lamp Gear Tray (240v Mains)	/GT-LEDPL



5 YEAR WARRANTY
(Full terms & conditions on request)

